

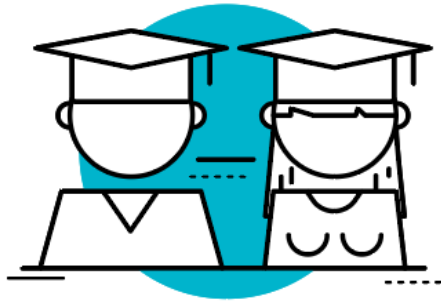
Artevelde University of Applied Sciences

Line of expertise People, Society and Digitalization

 **mens, samenleving
& digitalisering**




Some Quick Facts



15,000
STUDENTS



12
CAMPUSES



5
EXPERTISE DOMAINS



1,400
STAFF MEMBERS

CAPITAL OF
EAST-FLANDERS



> 70.000 STUDENTS



POPULATION



248.739
inhabitants

MULTICULTURAL CITY



MEDIEVAL CITY



SURFACE AREA

156,2 km²



BICYCLE FRIENDLY CITY



Belgium, at the heart of Europe

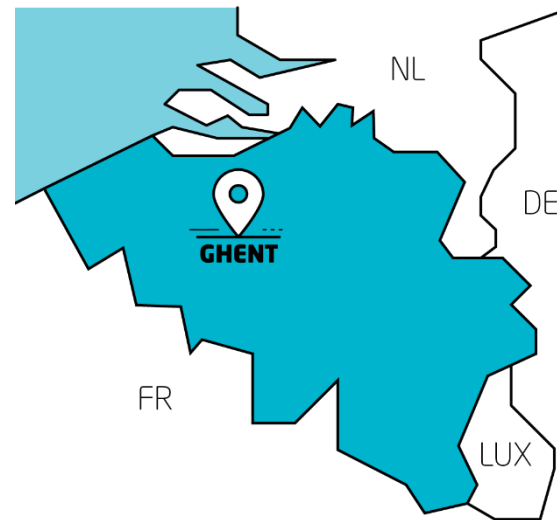


Belgium is a federal, multilingual state

Three communities:
Flemish community,
French community,
German community



Studying in Ghent truly means studying at the heart of Europe.
A 30-minute train ride to Brussels, a 3-hour drive to Paris or Amsterdam, and London just waiting on the other side of the North Sea.

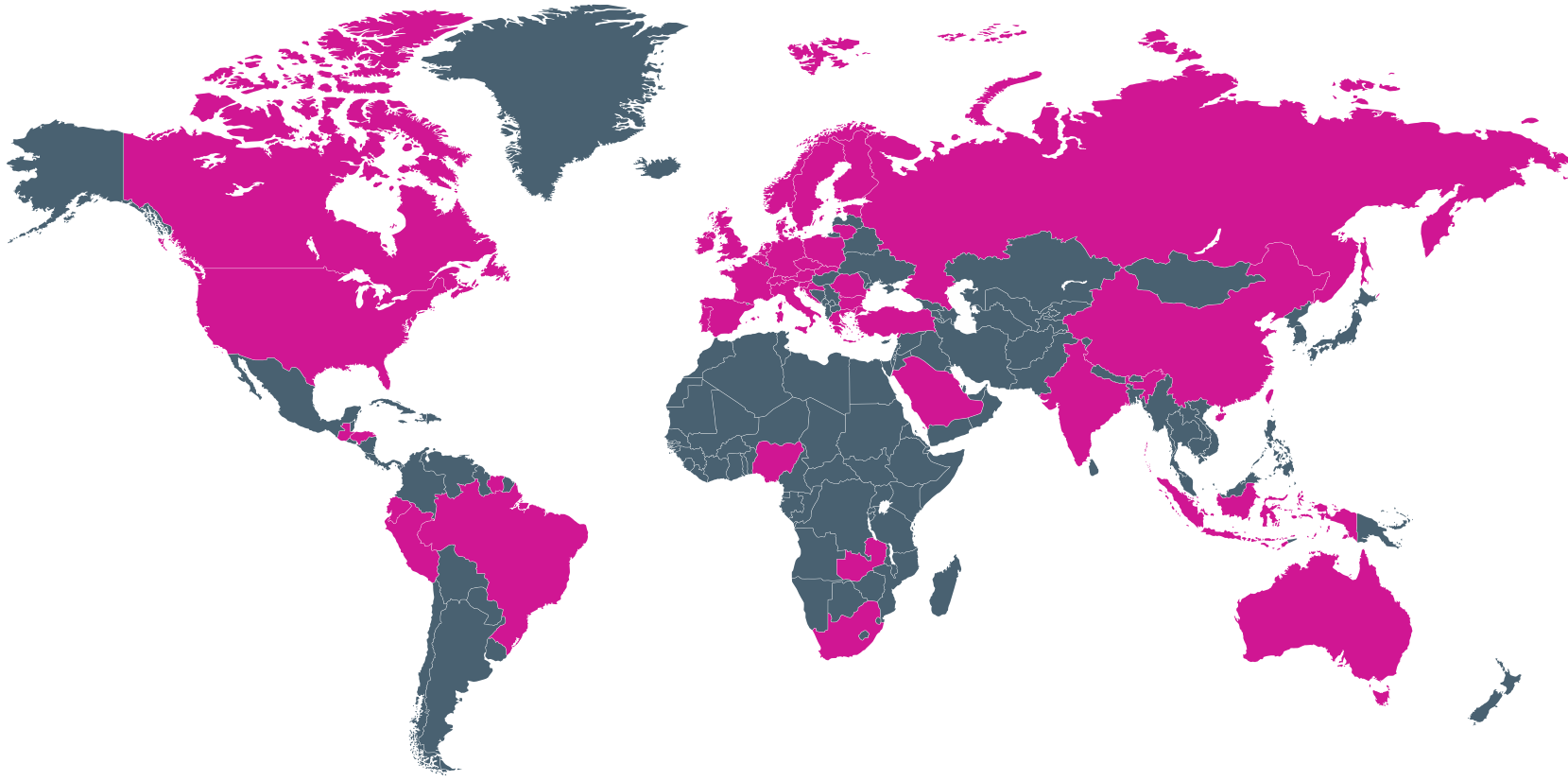




‘One of Europe’s greatest discoveries – small enough to feel cozy but big enough to stay vibrant’

Lonely Planet

**Artevelde UAS is everywhere... we are collaborating with
282 partners in 48 countries!**



Artevelde UAS covers five expertise networks

BUSINESS AND MANAGEMENT



COMMUNICATION, MEDIA AND DESIGN



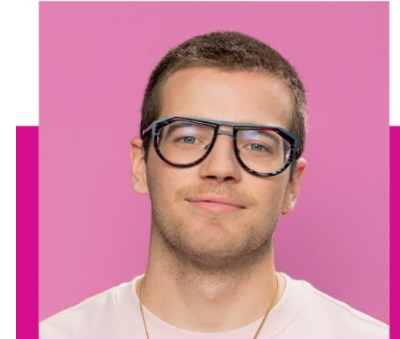
HEALTH AND CARE



EDUCATION



PEOPLE AND SOCIETY



Every expertise network covers:

- Education (AD and BA programmes)
- Lifelong learning (postgraduate programmes, continuous development, ..): Artevelde Academy
- (International) Research projects and Services (partners from the sector)

Nexus between those elements creates more impact and expertise.

Expertise Network People and Society

**BUSINESS AND
MANAGEMENT**



**COMMUNICATION,
MEDIA AND DESIGN**



**HEALTH
AND CARE**



EDUCATION



**PEOPLE AND
SOCIETY**

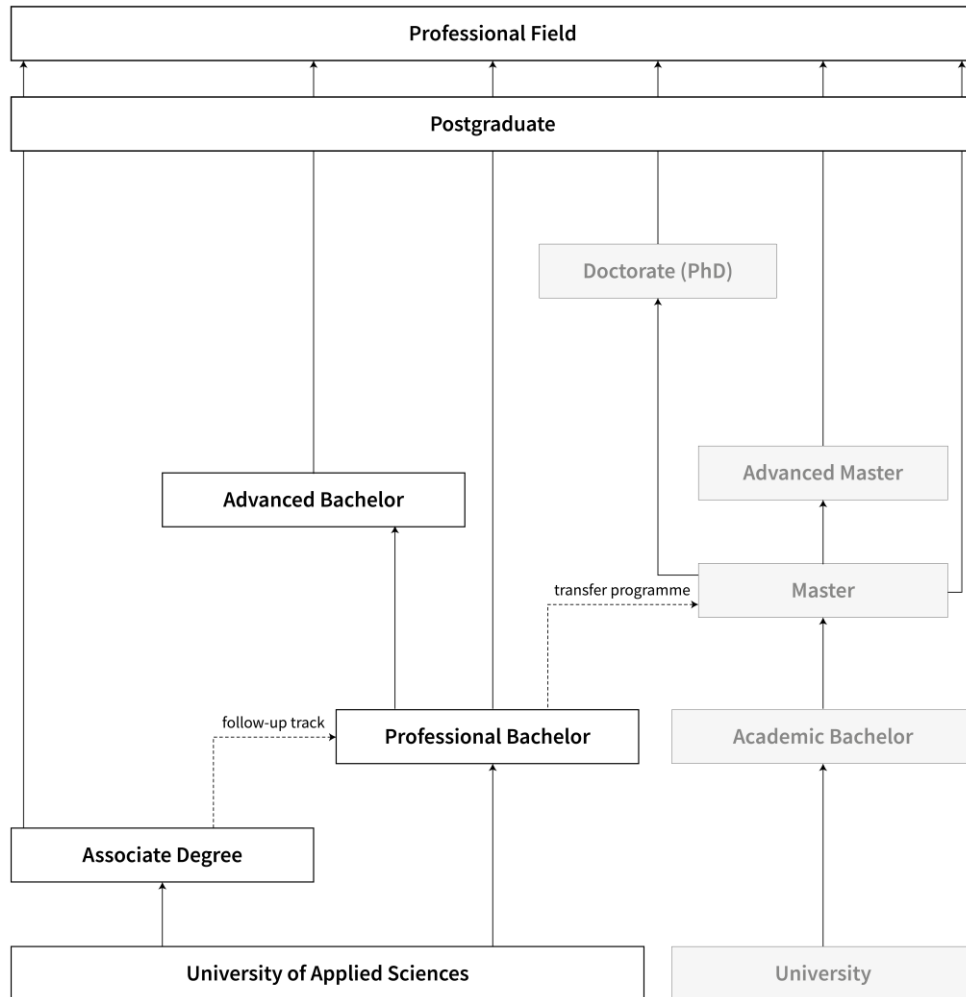


Strong high-quality programmes: Innovative and relevant types of education

Goal: training students

- to become competent professionals, global citizens
- to be proficient in the '21st century' skills

The Flemish Education System



- 75 % of Flemish secondary education students progress to higher education
- Artevelde UAS:
 - Bachelor's degree (180 ECTS) = 3 years
 - Bachelor of Nursing (240 ECTS) = 4 years
 - Associate degree programmes (90-120 ECTS)
- Artevelde University of Applied Sciences is a member of the Ghent University Association.

European (EQF) and Flemish Qualification Framework (FQF)

Frameworks for classifying different study levels according to an objective scale FQF and EQF **consist of 8 levels**

8 > University - Doctor

7 > University / university college - Master

6 > University / university college - Bachelor

5 > HBO5 - associate's degree programmes

4 > Secondary education
> Special needs secondary education
> Learning and working
> Secondary adult education
> Se-n-Se

3 > Secondary education
> Special needs secondary education
> Learning and working

2 > Basic education
> Secondary education
> Special needs secondary education
> Learning and working

1 > Final attainment levels of primary education

European and Flemish Qualification Framework

FQF level 8	Doctor/ PHD
FQF level 7	Master
FQF level 6	Bachelor/ Undergraduate
FQF level 5	Associate Degree/ recognised professional qualifications level 5
FQF level 4	Final objectives Secondary Education
FQF level 3	First stage of Secondary Education
FQF level 2	Basic Education
FQF level 1	Primary Education

Description of FQF levels

	Knowledge and skills	Context, autonomy and responsibility
FQF level 8		
FQF level 7		
FQF level 6	<ul style="list-style-type: none">critically evaluating and combining knowledge and insights from a specific areaapplying complex specialised skills, linked to research resultsgathering and interpreting relevant data and making innovative use of selected methods and resources to solve non-familiar complex problems	<ul style="list-style-type: none">acting in complex and specialised contextsfunctioning with complete autonomy and considerable initiativetaking shared responsibility for the definition of collective results
FQF level 5		
FQF level 4		
FQF level 3		
FQF level 2		
FQF level 1		

<https://vlaamsekwalificatiestructuur.be/en/what-is-fqf/levels-of-qualifications/>





ENW People and Society: Study Programmes

Associate Degree (EQF level 5) 2 Y, 120 ECTS	Bachelor programme (EQF level 6)/ undergraduate 3 Y, 180 ECTS	International Semester Programmes; 30 ECTS; English-taught
AD Social Work and Care	BA Social Work	<i>Social Work for a challenging Society</i> (autumn)
AD Social and Cultural Work		<i>Social Work in Urban Areas</i> (joint!; host alternately)
AD Social Educational Care Work	BA Social Work: Personnel Work/ Human Resources Management ; parallel track	<i>Sustainable HRM: Strategies, practices and challenges</i> (autumn)
AD Flemish sign Language Interpreting		
AD Information Management: Library and Archives	BA Early Childhood Education BA Applied Psychology!	<i>Together for Social Education</i> (spring)



ENW People and Society: Lifelong Learning

Postgraduate Programmes

Continuous Development (link research!) in the domains of

Human Resources Management

Professional Coaching

Supported Employment Coaching

Contextual Therapy

Politicisation in Social Work

Grief and Loss Counsellor

....

1. Strength-oriented work (with children, youngsters and family)
2. Working inclusive, participatory, and creatively
3. Human centred digitalization
4. Coaching, support and professionalization
5. Developing organisations, networks, and leadership
6. Policy influencing with impact



ENW People & Society: Research and Innovation Centre

People & society VISION

- Co-creative research and development, aimed at social impact with an eye for the vulnerable
- Combining micro, meso and macro perspectives on the individual, organizations and society
- Strong practice innovations because of our specific expertise, methods and approach
- Strong links between education, research and lifelong learning based on our expertise



ENW People & Society: Research and Innovation Centre

- Our **practice-oriented** research targets the renewal and improvement of the professional and educational practice
- We provide **innovative, hands-on and smart solutions** to specific questions, and tackle broader societal challenges
- Our experts work in close collaboration with **our partners** - SMEs, companies, non-profit and public authorities, knowledge and research institutes, etc.
- We introduce research and science to the **general public**

ENW People & Society

Line of expertise People, Society and Digitalization

Since 2007:



Op een professionele manier leren chatten met je doelgroep – Child Focus – 11 mei 2023-








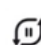
Line of expertise People, Society and Digitalization

Since 2007:

1. Research and development projects about online help in social work
2. Supporting the process for implementing online and blended help in social work organizations
3. Educational and training projects in online help

Line of expertise People, Society and Digitalization

1. Research and development projects: developing online methods and tools

Online tools for client communication									
Information sites			Communication tools				Supporting tools		
									
			Direct 	Postponed 	Direct 	Postponed 			
...	Chatbot	Tag cloud	Activities	News	Testimonials	Links	FAQ's	Tips & advice	...
One-to-one chat	Voice over IP	E-mail	Contactform	SMS	Chatroom	Webinar	Forum	Social media	Serious game
Genogram	Ecoogram	Budgettool	Lifeline	Online Diary	Monitoring tool	Selftest	Planner	Referring tools	Maps
Measured Links	...								
Online service						Evaluation tools			
Online entry	Appointment planner	reminder	e-box	Client file	...	Complaints	Satisfaction	Effects	

Line of expertise People, Society and Digitalization

1. Research and development projects: developing online methods and tools

- **Ch@tlas**: A method for one-on-one anonymous chat support in first line social services
More information (in Dutch)



methodiek onlinehulp in eerstelijns welzijnswerk

in opdracht van het OnlineHulpUitwisselingsPlatform (OHUP)

Hilde Vlaeminck - Tim Vanhove - Martine De Zitter - Philippe Bocklandt

- **Optim@il**:
A method for email support in social services and in parenting support
More information (in Dutch)



Line of expertise People, Society and Digitalization

1. Research and development projects: developing online methods and tools

- **Effects of chat support:** a triangular multi-method research concept on anonymous chat help in first line social services

More information (in Dutch)

- **European research and development of a method for one-to-one chat support in first line social services with a focus on sexual abuse**

More information (also in English)



Ervaren baat in éénmalige chathulp
een driehoeksanalyse van bevraging van oproepers,
beantwoorders en transcripten uit
eerstelijns welzijnswerk in Vlaanderen



Line of expertise People, Society and Digitalization

1. Research and development projects:
developing online methods and tools

- **Chat help training**: analysis of and
recommendations on the education of
chat help counsellors

More information (in Dutch)

- How social workers use an **online
diary** (exploratory research)

More information (in Dutch)



Chathulpvorming binnen het
OnlineHulpUitwisselingsPlatform



Line of expertise People, Society and Digitalization

1. Research and development projects: developing online methods and tools

- **Consensus, dreams and barriers for online help in Flanders.**

The urge, doubts and requirements were mapped for online help in welfare work and mental healthcare

More information (in Dutch)

- **Online help opportunities for detainees:**

Exploratory study on priorities and framework conditions for online help and services for prisoners through Prison Cloud

More information (in Dutch)



Line of expertise People, Society and Digitalization

1. Research and development projects: developing online methods and tools

- **Building blocks of a Flemish online help action plan.** Policy recommendations for supporting online help by Minister of Welfare, Public Health and Family.

More information (in Dutch)



- **Do young people or their friends need (online) support when they have lost someone by suicide?**

Exploratory research.

More information (in Dutch)



Line of expertise People, Society and Digitalization

1. Research and development projects: developing online methods and tools

- **HINCL**: e-learning about transparent and inclusive online information on parenting.
More information (in Dutch)



- **Blended help in Public Social Welfare Centre's** Research on the implementation of the combination of face-to-face conversations and online help.
More information (in Dutch)



Line of expertise People, Society and Digitalization

1. Research and development projects: developing online methods and tools



- **WRapp:**

Research on the development of quality criteria and a 'welfare-ranking' for apps and website in welfare and mental healthcare.

More information (in Dutch)

- **O³ - Online Parenting Support for every parent:** research and development project on good practices, a framework, do's and don'ts on online parenting support
More information (in Dutch)

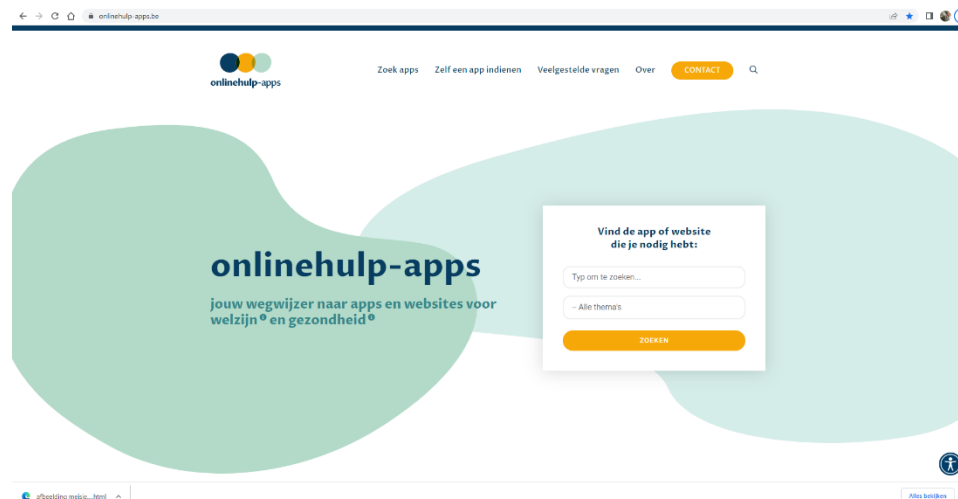


Line of expertise People, Society and Digitalization

1. Research and development projects: developing online methods and tools

- **Appstore for well-being and mental health**: development of an app store which is a website that collects an overview of useful apps and websites for social professionals.

<https://www.onlinehulp-apps.be/favorieten/onlinehelp-appstore>



Line of expertise People, Society and Digitalization

1. Research and development projects: developing online methods and tools

- **Simba:** A method for implementing video-calling on a successful way in ambulatory welfare work

[More information \(in Dutch\)](#)



Line of expertise People, Society and Digitalization

1. Research and development projects: developing online methods and tools

- **Digital cooperation in Youth care:** In order of Opgroeien, an agency of the government, and in collaboration with SAM and UCLL (University of applied sciences of Leuven and Limburg), we searched for qualitative digital cooperation platforms to enable collaboration between youths, their network and their caretakers.

More information (in Dutch)



Line of expertise People, Society and Digitalization

1. Research and development projects: developing online methods and tools

- **SWIPE**: Inspiring Digital practices in Strong Social Work. Collection and presentation of a lot of good practices in social work organizations. Parameters have been set so you can see why a practice is successful or why not.

More information (in Dutch)

- **DIGI-ACT** = digital activation of people with disabilities. Research on digital inclusion and people with disabilities.

More information (in Dutch)



Line of expertise People, Society and Digitalization

1. Research and development projects: developing online methods and tools

- **Hybrid Family care** : research to levers for better hybrid family care.
More information (in Dutch).

About the strengths, weaknesses, levers and pitfalls of 3 organizations in Flanders who provide family care, also online.

- **Development of a quality framework for Online help.**

Framework with minimal quality requirements that organizations in welfare and mental healthcare can use to implement ICT technology. In partnership with Thomas More university and with SAM.

More information (in Dutch)



Line of expertise People, Society and Digitalization

1. Research and development projects: developing online methods and tools

- **Digiwijzer.be** = a site that lists initiatives on digital inclusion to provide a clear overview for social professionals.
More information (in Dutch)



Line of expertise People, Society and Digitalization

2. Supporting the process for implementing online help in social work organizations



Line of expertise People, Society and Digitalization

2. Supporting the process for implementing online help in social work organizations

A few examples:

- **customized training** for management and/or employees as an introduction to online and blended help options
- a method to **determine a vision** on online and blended help in the organisation

Line of expertise People, Society and Digitalization

2. Supporting the process for implementing online help in social work organizations

A few examples:

- support with **how to position online help offerings** in relation to the organisation's other help and service offerings
- selecting and developing a **pilot project** or experiment
- conducting a **quick-scan or perceived-benefit analysis** of online and blended help offerings
- ...

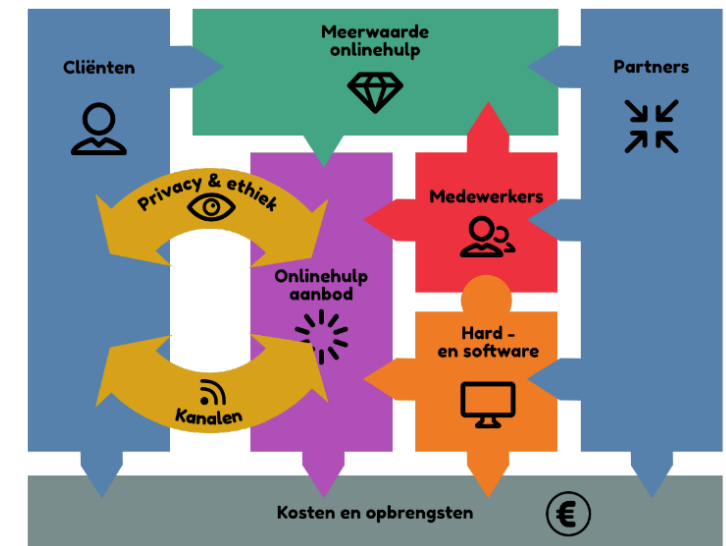
Line of expertise People, Society and Digitalization

2. Supporting the process for implementing online help in social work organizations

In the process support tools, have been developed. Some of the offerings:

- Quick scan for online and blended help in welfare and mental healthcare:

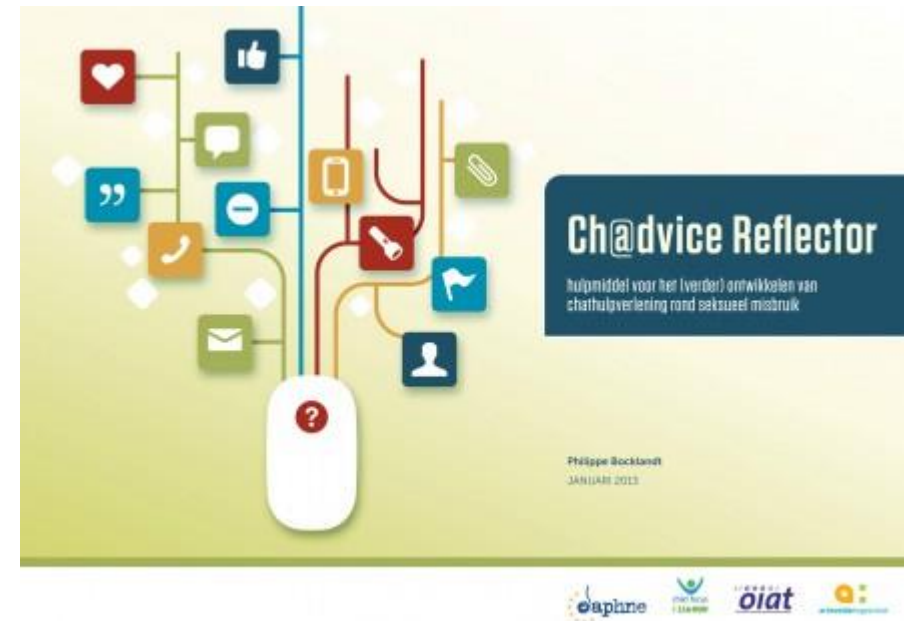
a tool, based on Business Model Canvas that enables an organization to assess the state of preparedness for implementing online help



Line of expertise People, Society and Digitalization

2. Supporting the process for implementing online help in social work organizations

- **Chat reflector:** a questionnaire on starting with chat support



Line of expertise People, Society and Digitalization

2. Supporting the process for implementing online help in social work organizations

- **An e-book and a toolbox** for social workers who want to communicate on social media



Line of expertise People, Society and Digitalization

3. Educational and training projects in Online and blended help

An introduction in online and blended help and online help skills is part of the curriculum of the Bachelor of Social Work:

- Online social work for individuals and Online social work for groups in the Bachelor of Social Work, 3rd grade (4 ECTS)
- Online social work for individuals and Online social work for groups – a course in our International Semester programme ‘Social work for a challenging society’ (4 ECTS)

Line of expertise People, Society and Digitalization

3. Education and training projects in Online and blended help

- In their bachelor's project, students address a relevant research question on online and blended support or digitalization in general for the sector. The develop part of an online tool, reflect on the usability of online tools, introduce an online diary in their field work, make a checklist when to start with blended care, collect testimonies of good digital social work practices, etc.

Training programmes on online and blended help are organized for social workers, including programmes on e-learning in their practice (on demand).



More information?

<https://www.onlinehulp-arteveldehogeschool.be/in-english/>



Contact:

Philippe.Bocklandt@arteveldehs.be

Jana.Verplancke@arteveldehs.be

Martine.Dezitter@arteveldehs.be

Charlotte.Vanbleu@arteveldehs.be

Tim.Vanhove@arteveldehs.be

Lien.Faelens@arteveldehs.be

Marlies.Debrael@arteveldehs.be

